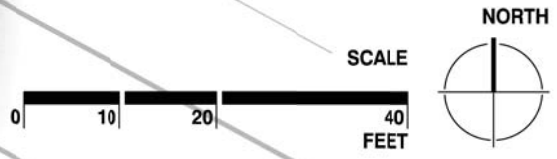


NOTE
SEE C-0.1 FOR EXISTING CONDITIONS PLAN

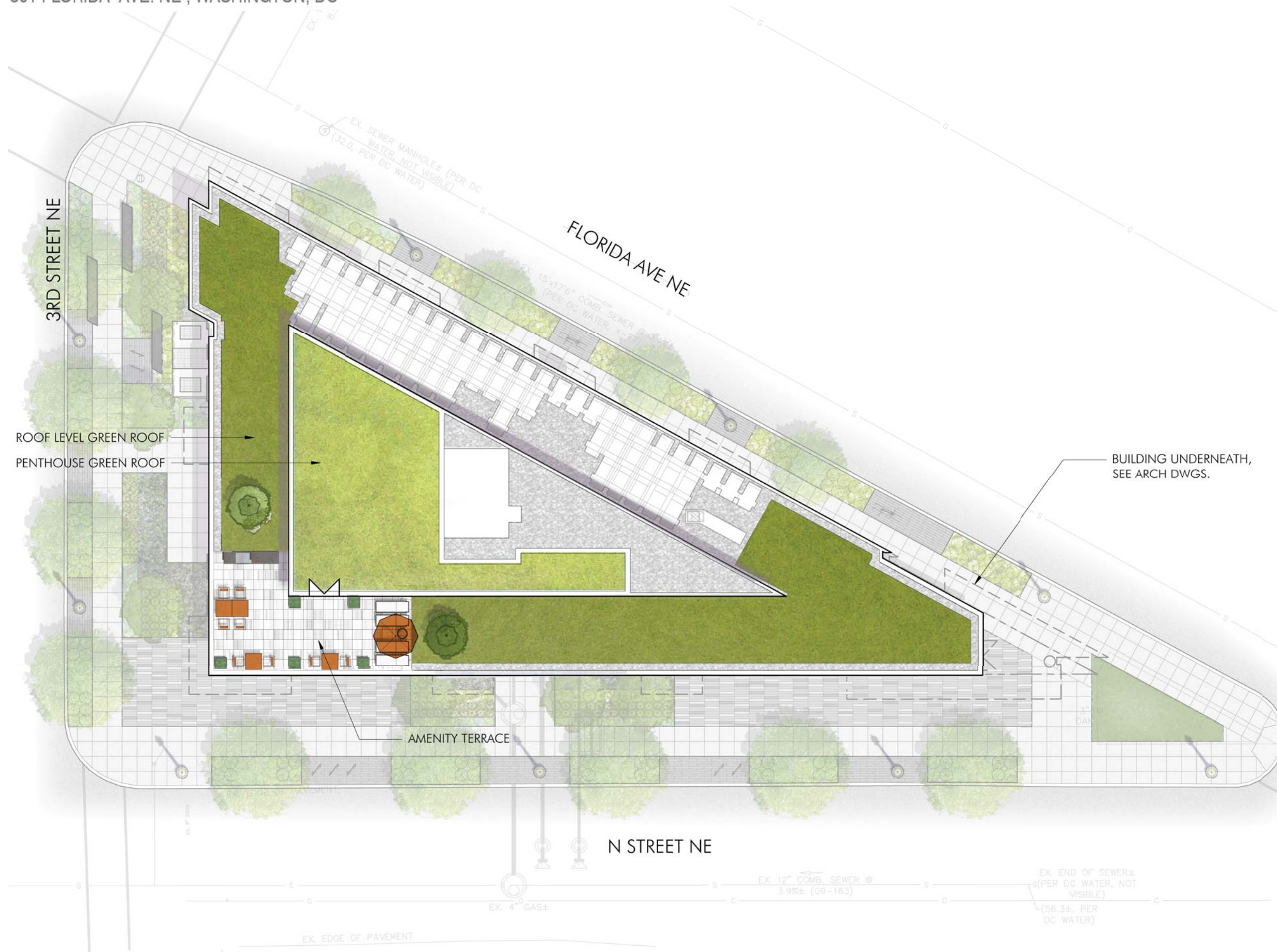
NOTES:

KEY / LEGEND:



GROUND FLOOR LANDSCAPE PLAN

NOTES:



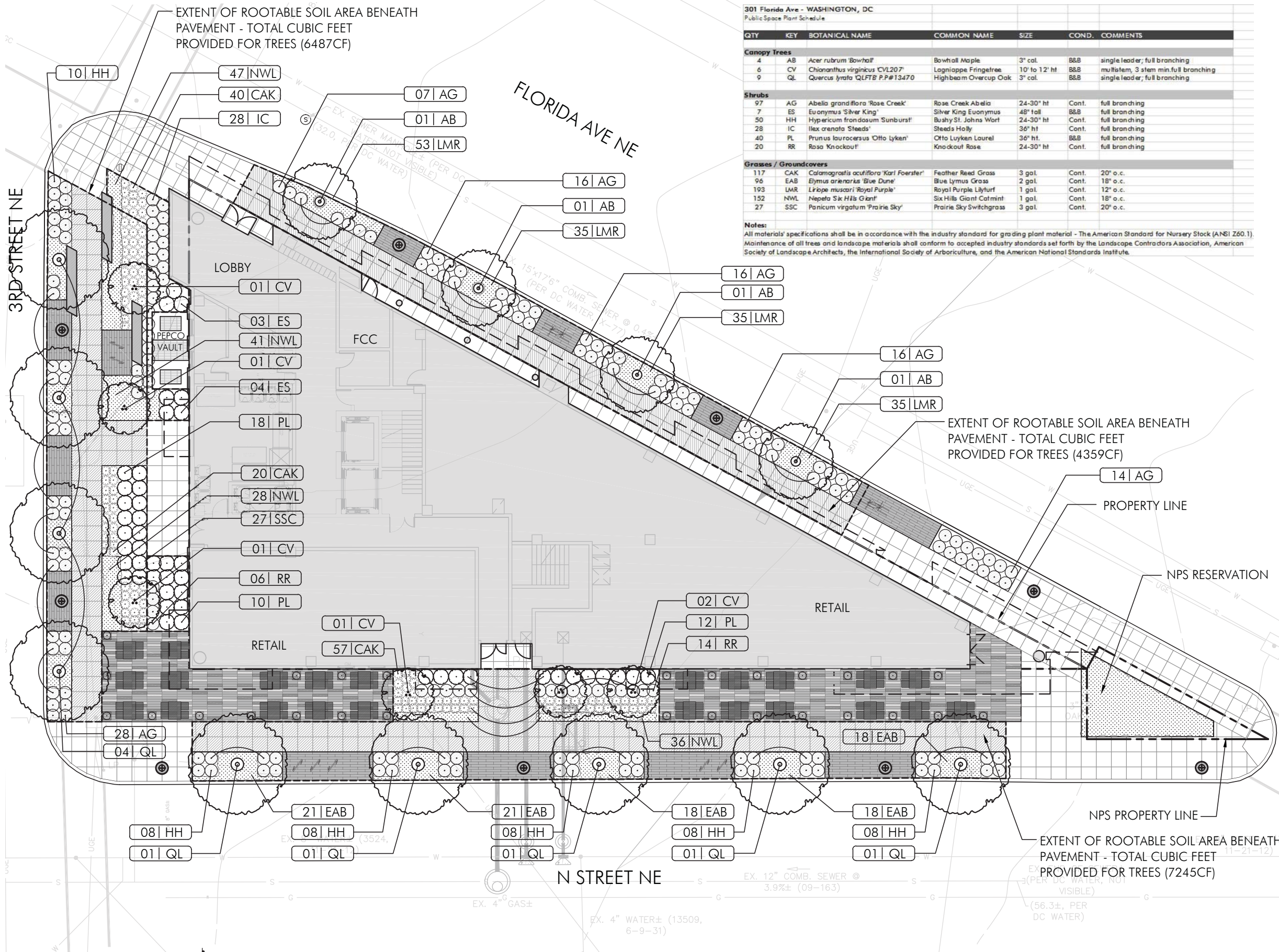
BUILDING UNDERNEATH,
SEE ARCH DWGS.

KEY / LEGEND:



ROOF LEVEL LANDSCAPE PLAN

L-0.2



301 Florida Ave - WASHINGTON, DC
 Public Space Plant Schedule

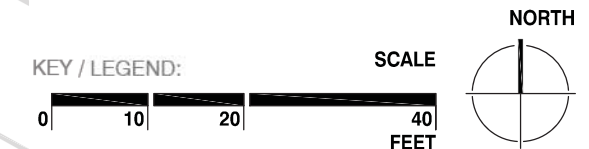
QTY	KEY	BOTANICAL NAME	COMMON NAME	SIZE	COND.	COMMENTS
Canopy Trees						
4	AB	<i>Acer rubrum</i> 'Bowhall'	Bowhall Maple	3" col.	B&B	single leader; full branching
6	CV	<i>Chionanthus virginicus</i> CVL207	Lagunippe Fringefree	10' to 12' ht	B&B	multistem, 3 stem min. full branching
9	QL	<i>Quercus lyrata</i> QLFTB P.P.#13470	Highbeam Overcup Oak	3" col.	B&B	single leader; full branching
Shrubs						
97	AG	<i>Abelia grandiflora</i> 'Rose Creek'	Rose Creek Abelia	24-30" ht	Cont.	full branching
7	ES	<i>Euonymus</i> 'Silver King'	Silver King Euonymus	48" tall	B&B	full branching
50	HH	<i>Hypericum frondosum</i> 'Sunburst'	Bushy St. Johns Wort	24-30" ht	Cont.	full branching
28	IC	<i>Ilex crenata</i> 'Steads'	Steads Holly	36" ht	Cont.	full branching
40	PL	<i>Prunus laurocerasus</i> 'Otto Lyken'	Otto Lyken Laurel	36" ht.	B&B	full branching
20	RR	<i>Rosa</i> 'Knockout'	Knockout Rose	24-30" ht	Cont.	full branching
Grasses / Groundcovers						
117	CAK	<i>Calamagrostis acutiflora</i> 'Karl Foerster'	Feather Reed Grass	3 gal.	Cont.	20" o.c.
96	EAB	<i>Elymus aricularis</i> 'Blue Dune'	Blue Lymus Grass	2 gal.	Cont.	18" o.c.
193	LMR	<i>Liriope muscari</i> 'Royal Purple'	Royal Purple Lilyturf	1 gal.	Cont.	12" o.c.
152	NWL	<i>Nepeta</i> 'Six Hills Giant'	Six Hills Giant Catmint	1 gal.	Cont.	18" o.c.
27	SSC	<i>Panicum virgatum</i> 'Prairie Sky'	Prairie Sky Switchgrass	3 gal.	Cont.	20" o.c.

Notes:
 All materials' specifications shall be in accordance with the industry standard for grading plant material - The American Standard for Nursery Stock (ANSI Z60.1). Maintenance of all trees and landscape materials shall conform to accepted industry standards set forth by the Landscape Contractors Association, American Society of Landscape Architects, the International Society of Arboriculture, and the American National Standards Institute.

NOTES:

PLANTING NOTE:
 ALL PLANTING SPECIES AND QUANTITIES ARE PROVIDED FOR REFERENCE ONLY AND MAY BE MODIFIED WITH FINAL ENGINEERING AND DESIGN PROVIDED THAT THE GENERAL QUALITY AND CHARACTERISTICS ARE IN SUBSTANTIAL CONFORMANCE WITH THAT SHOWN.

KEY / LEGEND:



GROUND FLOOR PLANTING PLAN

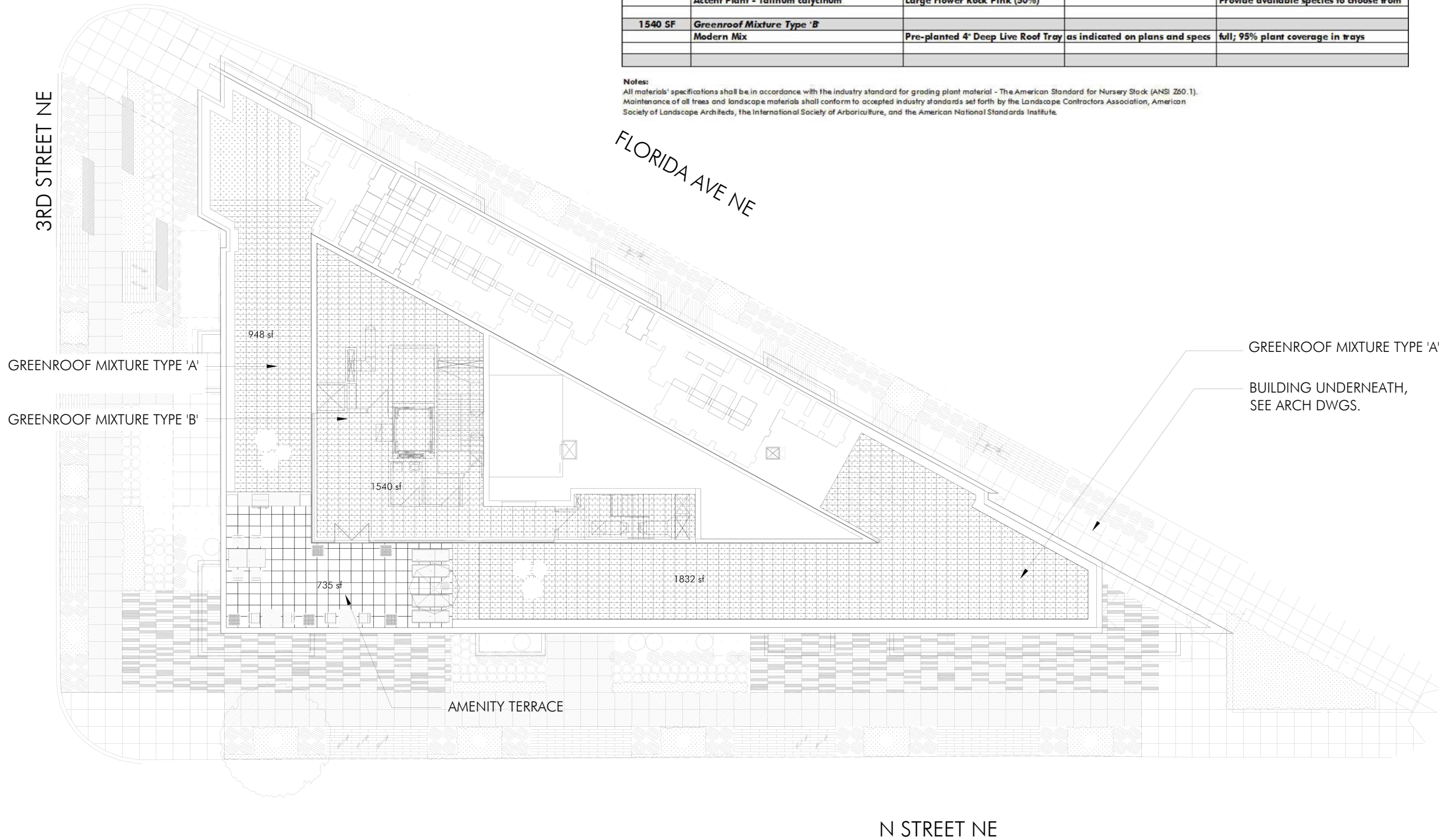
L-0.3

301 FLORIDA STREET ROOF TERRACES PLANT SCHEDULE				
Green Roof Plant Material				
QUAN	BOTANICAL NAME	CONDITION	TRAY SIZE	REMARKS
2780 SF	Greenroof Mixture Type 'A'		as indicated on plans and specs	full; 95% plant coverage in trays Provide 2 accent plants per module
	Modern Mix w/ accent plants			
	Accent Plant - <i>Allium senescens sub montanum</i>	Mountain Garlic (50%)		
	Accent Plant - <i>Talinum calycinum</i>	Large Flower Rock Pink (50%)		Provide available species to choose from
1540 SF	Greenroof Mixture Type 'B'		as indicated on plans and specs	full; 95% plant coverage in trays
	Modern Mix			
		Pre-planted 6" Deep Live Roof Tray		
		Pre-planted 4" Deep Live Roof Tray		

Notes:
 All materials' specifications shall be in accordance with the industry standard for grading plant material - The American Standard for Nursery Stock (ANSI Z60.1).
 Maintenance of all trees and landscape materials shall conform to accepted industry standards set forth by the Landscape Contractors Association, American Society of Landscape Architects, the International Society of Arboriculture, and the American National Standards Institute.

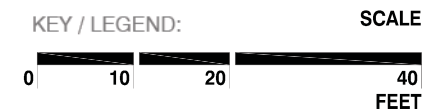
NOTES:

PLANTING NOTE:
 ALL PLANTING SPECIES AND QUANTITIES ARE PROVIDED FOR REFERENCE ONLY AND MAY BE MODIFIED WITH FINAL ENGINEERING AND DESIGN PROVIDED THAT THE GENERAL QUALITY AND CHARACTERISTICS ARE IN SUBSTANTIAL CONFORMANCE WITH THAT SHOWN.



KEY / LEGEND:

KEY / LEGEND:



NORTH



ROOF LEVEL PLANTING PLAN

L-0.4

NOTES:



KEY / LEGEND:

ELEVATION - FLORIDA AVENUE

L-0.5